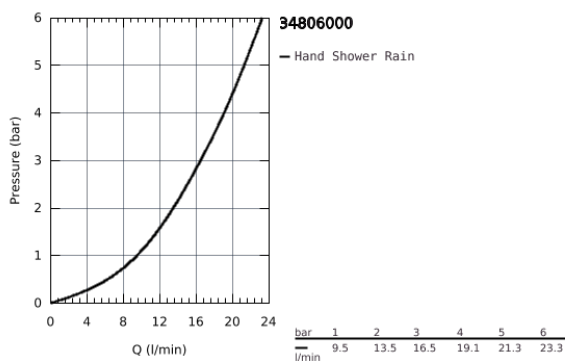
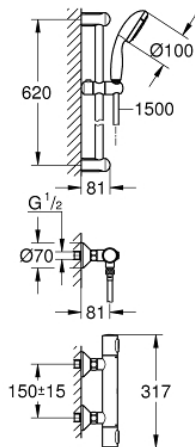


34 806 000 GROHTHERM 500 THERMOSTATIC SHOWER MIXER 1/2" WITH SHOWER SET FOR LOW PRESSURE

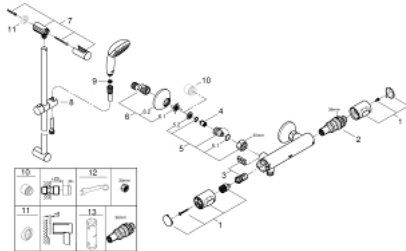


PRODUCT DESCRIPTION

- Colour: Chrome
- Consisting of:
 - Grotherm 500 thermostatic shower mixer 1/2" (34 793)
 - Tempesta 100 shower rail set 1 spray for low pressure, 620 mm rail (27 214 + 28 161 + 27 523)
- min. recommended pressure 0.5 bar to comply with EN1111



34 806 000 GROHTHERM 500 THERMOSTATIC SHOWER MIXER 1/2" WITH SHOWER SET FOR LOW PRESSURE



SPARE PARTS, June 2020 – now

- 1: GRT 500 temperature control handle (Spare part-nr. 49178000)
- 2: thermostatic compact cartridge 1/2" (Spare part-nr. 49175000)
- 3: headpart (Spare part-nr. 49174000)
- 4: Non-return valve (Spare part-nr. 08565000)
- 5: connection nipple (Spare part-nr. 49179000)
- 5.1: O-Ring Ø17 x Ø2 (Spare part-nr. 0305500M)
- 5.2: Filter (Spare part-nr. 0726400M)
- 6: S-union (Spare part-nr. 12075000)
- 6.1: Sealing washer (Spare part-nr. 0138600M)
- 6.2: Escutcheon (Spare part-nr. 0221000M)
- 7: Outlet shower holder (Spare part-nr. 48098000)
- 8: Sliding piece (Spare part-nr. 48099000)
- 9: Strainer (Spare part-nr. 0700200M)
- 10: Extension 3/4", 20 mm (Spare part-nr. 0713000M)*
- 11: Spacer (Spare part-nr. 48051000)*
- 12: Special Spanner (Spare part-nr. 19377000)*
- 13: Socket Spanner (Spare part-nr. 49059000)*

* Optional accessories